

Experience, beyond Security

UBio-X FacePro



Slim and Compact



New Sustainable
Services



Comprehensive
RFID



Convenient Customer
Experience with Wi-Fi

UBio Your Bio All the Way



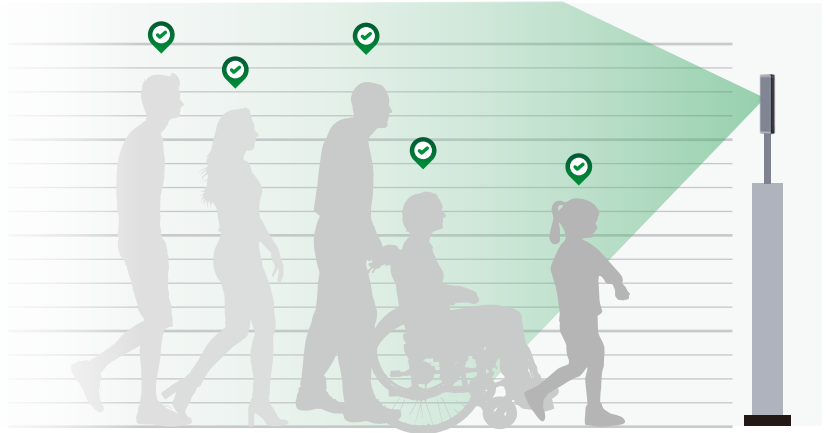
Fast and Accurate Access Control

It is an industry-leading performance access control device.

By embedding a high-performance algorithm, users can authenticate in a faster and more accurate manner. The device enables to detect users above or below standard height

High-performance algorithm

- Face 1:30,000 templates < 1 sec
- Fingerprint 1:50,000 templates < 1 sec
- Up to 30,000 users (1:1 Face)
- Up to 500,000 users (1:1 Fingerprint)



Slim and Compact Design

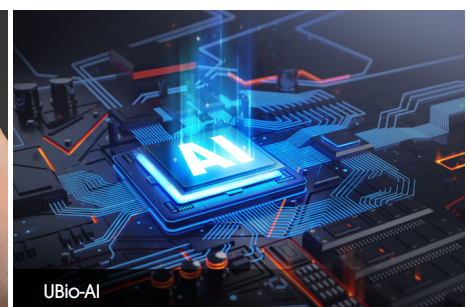
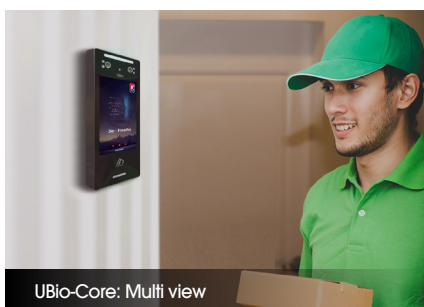
UBio-X Face Pro can be deployed in various sites with its compact design. With a compact and moderately sized LCD screen, it can be deployed in different facilities from small-scale to large-scale businesses.



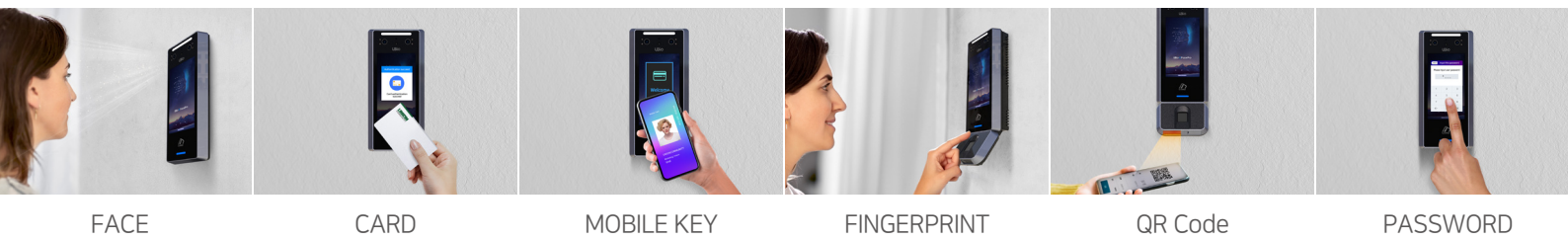
New, Sustainable Services

UBio-X Face Pro is a second released product of UNIONCOMMUNITY's hardware unification. Beyond security, we provide users sustainable experiences through key firmware update.

Ex) Multi view, UBio-AI, VIP Tracking Service, etc.



* UBio-Core provides various services with its upgraded version



FACE

CARD

MOBILE KEY

FINGERPRINT

QR Code

PASSWORD



Comprehensive RFID

UBio-X Face Pro unifies RF, SC, and HID card types into one. In addition, RF double expands the authentication distance, enhancing customer convenience.

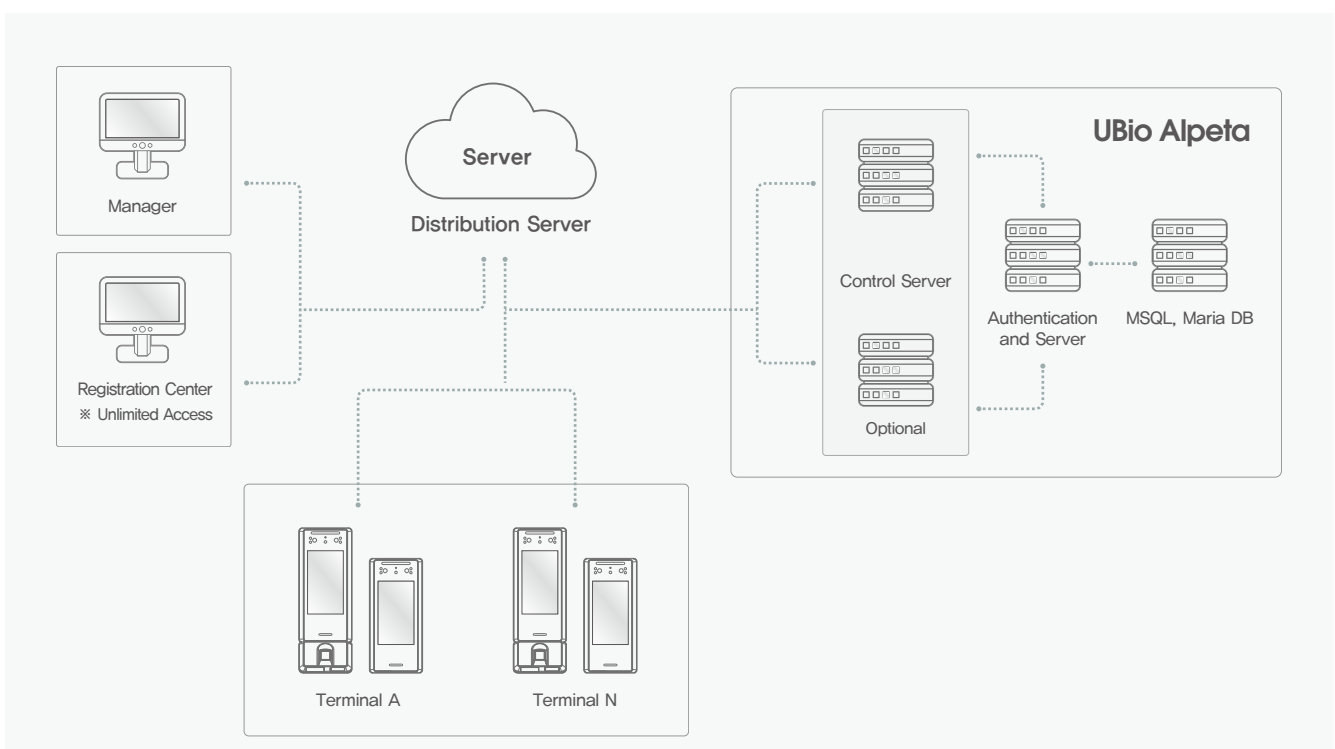
* HID iCLASS (Optional)




Convenient Customer Experience

Wi-Fi is supported for the user to wirelessly connect to the internet and integrate with UBio-X Face Pro, which provides convenient customer experience.

SYSTEM CONFIGURATIONS



SPECIFICATION

Model Name			UBio-X Face Pro
Model Image			
General	CPU		1.8GHz QUAD-Core
	NPU		O (2.3 TOPS)
	MEMORY	Flash	16GB eMMC
		RAM	4GB (LPDDR4)
	LCD	type	5" (TFT IPS LCD)
		Resolution	720 X 1280
	Speaker		Audio Codec 1W
	MIC		Waterproof MIC
	Operating Temperature		-20℃ ~ 60℃
	Operating Humidity		0% ~ 90%, non-condensing
	Weight		336g
	Dimension (W x H x D) mm		92 X 200 X 21
	Temper		O
	IP Rating		IP55
	Certificates		KC / CE / FCC
Biometrics	Face	Recognition Distance	0.5M ~ 2M
		Matching Speed	<1 sec
		Liveness Defection	O
	FingerPrint	Template	UNION / ISO19794-2 / ANSI-378
		Extractor / Matcher	MINEX certified & compliant
		Image Dimension	256*292
		Resolution	500 DPI
RF	RF Read Range ¹⁾	EM	50 mm
		Smart Card	50 mm
		DESIRE EV1 / EV2 / EV3	45 mm
		FELICA	30 mm
	RF Option	125KHz EM	All in One
		13.56MHz Smart Card	
		Mifare (Plus)	
		Felica	
		ISO14443 A/B	
		ISO 15693	
		DESIRE EV1 / EV2 / EV3	
		HID Prox	Option
		HID iClass	Option
Mobile Card	NFC		O
	BLE		O
QR ²⁾	Image Sensor		640 X 480
	Symbolologies		1D / 2D
	FOV (H x V)		42° x 31.5°
	Mobile Phone (iOS)		Iphone: iOS 10.0 or above / BLE4.2 or above
	Mobile Phone (Android)		Android 6.0 or above / NFC Supported Device
	Encryption		Azure Key Vault / AES-128
	Recognition Distance		10cm (difference in models)
Capacity	Server Platform		On Premise / Cloud
	Face	1:N	30,000
		1:1	30,000
	FingerPrint	1:N	50,000
		1:1	500,000
	Event Log		10,000,000
	Picture Log		20,000
Interface	Ethernet		10 / 100M / 1000M 1 Port
	RS-485		1 Port
	RS-232		2 Port
	Wiegand		IN / OUT 1 Port
	Relay		2 Port
	USB	2.0	1Port
		Wifi	O
Power	Voltage		DC 15V ~ 24V
	Current		Max 1.1A @DC15V

1) Recognition distance may vary depending on the card's type

2) Attaching XScan-FQ5 is required to enable the supported functionality

Possible Integration

Thermal-I2



Integration for Measuring Personnel Temperature

Xscan-FQ5



Support Fingerprint & QR Code Authentication

Xscan-FP5



Support Fingerprint Authentication